

15 tried & true cone 10 glaze recipes



recipe cards for our
favorite high-fire pottery glazes

CONTENTS

Good news cone 10 potters! We've gathered some of our favorite cone 10 glaze recipes together in a convenient recipe-card format, perfect for printing and taking to the glaze lab or pottery studio. Whether you are interested in trying out some of the beautiful high-fire glazes that have been used for generations, or if you want to try something new, you've found the perfect resource.

Use the beautiful images here as a guide to the cone 10 surfaces you'll get, but be sure to always start out with small batches and have fun testing and tweaking! Now get out there and mix up some new high-fire glazes for your pottery!

OUR TOP 15 CONE 10 GLAZE RECIPES

Martin's Moveable Feast

Cone 10 oxidation

Oil Spot Glaze

Cone 10 oxidation

Iron Saturated "Frogskin" Glaze

Cone 11 reduction

John's Red (Peach Bloom)

Cone 10 reduction

Gold Stuff Crystalline Glaze

Cone 10 oxidation

Haynes Satin White Glaze

Cone 10 reduction

Val's Satin Black Glaze

Cone 10 reduction

Malcolm Davis Shino Glaze

Cone 10 reduction

Jim Brown's Blue Glaze

Cone 10 reduction

Magnesia Matt Glaze

Cone 10 reduction

Coleman's Vegas Red Glaze

Cone 8-10 reduction

Green to Black Glaze

Cone 10 oxidation or reduction

Elaine's Celadon Base Glaze

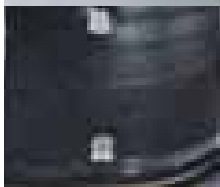
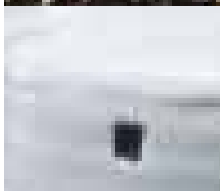
Cone 8-11 reduction

Iron Red Glaze

Cone 10 oxidation

Oribe Glaze

Cone 10 reduction



HIGH-FIRE

HIGH-FIRE

Martin's Moveable Feast

(Updated version of Show Saver)
(Cone 10 Oxidation)

Barium Carbonate	9.0%
Gerstley Borate	2.5
Lithium Carbonate	2.5
Strontium Carbonate	9.5
Wollastonite (calcium silicate)	1.0
Ferro Frit 3110	13.0
Nepheline Syenite	14.0
Grolleg	11.5
Silica	37.0
	<u>100.0 %</u>

Add: Bentonite 2.0%

French Chartreuse

Add: Chrome Oxide 0.5%

Victoria Green

Add: Chrome Oxide 0.50%
Copper Carbonate 0.75%

Brazilian Green

Add: Chrome Oxide 0.50%
Copper Carbonate 1.75%

Turkish Green

Add: Copper Carbonate 2.0%

Aegean Blue

Add: Copper Carbonate 2.0%
Cobalt Carbonate 0.1%

Maroon

Add: Manganese Carbonate 2.0%

Orchard Purple

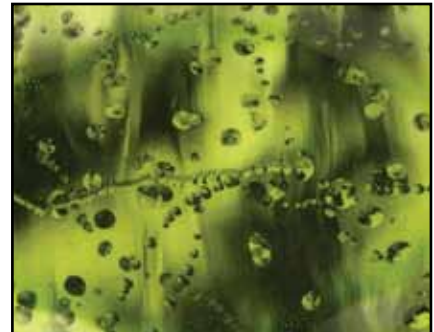
Add: Manganese Carbonate 2.0%
Cobalt Carbonate 2.0%

Persian Blue

Add: Cobalt Carbonate 1.0%
Manganese Carbonate 0.5%

Clear Black-Gray

Add: Black Nickel Oxide 1.00%
Cobalt Carbonate 0.25%



From Andrew Martin,
Ceramics Monthly, January 2011



HIGH-FIRE

HIGH-FIRE



Oil Spot/Hare's Fur Glazes

Hamada Rust

(Cone 10)

Gerstley Borate	12.40%
Whiting	6.20
Custer Feldspar	77.00
EPK Kaolin	4.20
Silica	0.20
	<u>100.00%</u>
Add: Synthetic Red Iron Oxide	8.70%

Nuka

(Cone 10)

Bone Ash	2%
Talc	2
Whiting	22
Wood Ash (unwashed) or Frit 3134	3
Custer Feldspar	36
OM-4 Ball clay	6
Silica	30
	<u>100%</u>

From John Britt,
Ceramics Monthly, May 2011

HIGH-FIRE

HIGH-FIRE

Iron Saturated Alkaline "Frogskin"

(Cone 11)

Wood Ash	30 %
Red Dirt***	20
Creek Sand	10
Crushed Bottle Glass	40
	<u>100 %</u>

Add: Bentonite 5-7 %

Measured by dry weight, slaked and passed wet through a window screen, refined in a ball mill for a couple of hours and applied to leather-hard greenware.

*** The common sandy red clay found throughout the mountains and piedmont of the southern Appalachian region.

From Matt Jones,
Ceramics Monthly, November 2010



Platter with abstract floral painting, 14 in. (36 cm) in diameter, with wax-resist brushwork and Iron Saturated Alkaline Frogskin Glaze, by Matt Jones, Leicester, North Carolina. *Photo: Tim Barnwell.*

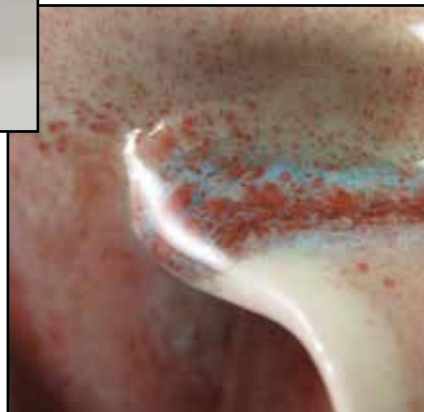


HIGH-FIRE

HIGH-FIRE



Cup, 5 in. (13 cm) in height, wheel-thrown porcelain, with John's Red Glaze gas-oxidation fired cone 10, striking (reduction period during cooling) for 2 hours at 1500°F.



John's Red (Peach Bloom)

(Cone 10 reduction)

Talc	3.64 %
Whiting	13.64
Zinc Oxide	4.55
Ferro Frit 3134	9.09
Custer Feldspar	48.18
EPK Kaolin	5.45
Silica	15.45
	<u>100.00 %</u>
Add: Copper Carbonate	0.80 %
Tin Oxide	1.20 %

From John Britt,
Ceramics Monthly, October 2010

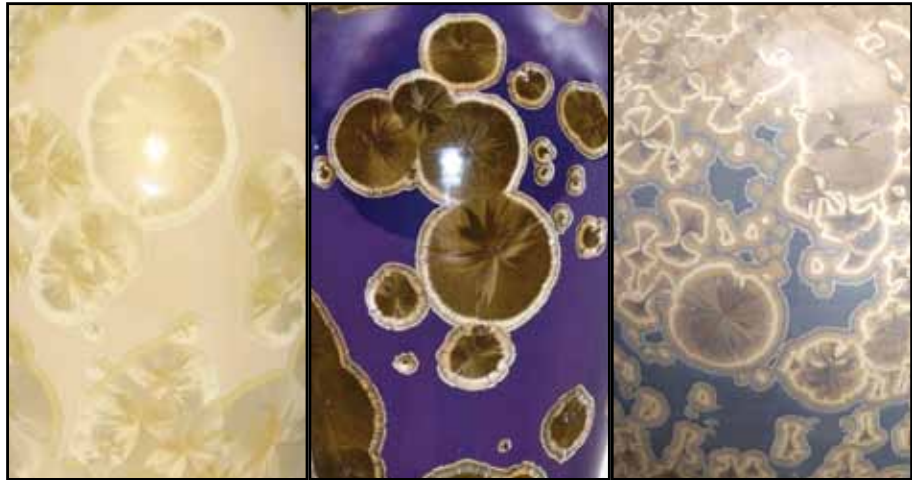
HIGH-FIRE

Gold Stuff Glaze

(Cone 10)

Fusion Frit F644	45.1 %
Zinc Oxide (calcined)	25.3
Bentonite	0.7
Molochite	0.4
Silica	28.5
	<u>100.0 %</u>
Add: Rutile	5.0 %
Ilmenite	3.0 %

From Diane Creber,
Ceramics Monthly, September 2010



HIGH-FIRE



HIGH-FIRE



Haynes Satin White Glaze

(Cone 10, reduction)

Dolomite	10 %
Talc	7
Whiting	8
Nepheline Syenite	45
Silica	30
	<u>100 %</u>

Add: Ultrox 10 %

Yields opaque satin surface with soda, but can show clay body on texture

Val's Satin Black Glaze (Variation)

(Cone 10, reduction)

Dolomite	15 %
Talc	13
Whiting	2
Custer Feldspar	20
Soda Feldspar	20
Kentucky Ball Clay (OM 4)	10
Silica	20
	<u>100 %</u>

Add: Cobalt Carbonate 3 %
Red Iron Oxide 9 %

Breaks black brown metallic with soda

Haynes Satin White and Val's Satin Black
from Fred Herbst,
Ceramics Monthly, October 2000



HIGH-FIRE

HIGH-FIRE

HIGH-FIRE



Malcolm Davis Shino Glaze

(Cone 10, reduction)

Soda Ash	17.27 %
Kona F-4 Feldspar	9.82
Nepheline Syenite	40.91
EPK Kaolin	18.18
Kentucky Ball Clay (OM 4)	13.82
	<u>100.00 %</u>

For use on porcelain,
add 6% Cedar Heights Redart

From Mel Jacobson,
Ceramics Monthly,
December 2000



HIGH-FIRE

HIGH-FIRE



Jim Brown's Blue Glaze

(Cone 10, reduction)

Whiting	28.00 %
Custer Feldspar	60.00
EPK Kaolin	12.00
	<u>100.00 %</u>

Add: Cobalt Carbonate 0.75 %
Rutile 4.00 %

From Tony Winchester,
Ceramics Monthly, November 2001

HIGH-FIRE

HIGH-FIRE



Magnesia Matt Glaze

(Cone 10, reduction)

Dolomite	4.7 %
Lithium Carbonate	2.0
Talc	8.0
Whiting	15.9
G-200 Feldspar	20.2
Grolleg Kaolin	18.9
Silica	30.3
	100.0 %

Add: Tin Oxide 3.5 %
 Macaloid 1.0 %



HIGH-FIRE

HIGH-FIRE



Coleman Vegas Red Glaze

(Cone 8–10, reduction)

Barium Carbonate	2.55 %
Dolomite	5.61
Gerstley Borate	9.18
Whiting	8.68
Custer Feldspar	53.57
EPK Kaolin	2.55
Silica	17.86
	100.00 %

Add: Copper Carbonate 0.41 %
 Tin Oxide 2.04 %
 Titanium Dioxide 0.10 %
 Yellow Iron Oxide 0.10 %

oxblood with purple undertones

From Tom & Elaine Coleman,
Ceramics Monthly, January 2003

HIGH-FIRE

HIGH-FIRE



Green to Black Glaze

(Cone 10)

Bone Ash	5.5%
Dolomite	17.3
Whiting	7.0
Custer Feldspar	35.1
EPK Kaolin	35.1
	<u>100.0%</u>

Add: Copper Carbonate	9.4%
Tin Oxide	3.4%

The glaze will be matt black when applied thick and soda fired in oxidation or reduction. A thin application combined with light soda glaze coverage can produce pumpkin oranges next to olive greens.

From Ryan McKerley,
Ceramics Monthly, March 2006



HIGH-FIRE

HIGH-FIRE



Elaine's Celadon Base Glaze

(Cone 8–11, reduction)

Whiting	21.2%
Zinc Oxide	2.7
Custer Feldspar	24.9
Ferro Frit 3110	8.8
EPK Kaolin	17.5
Silica (200-mesh)	24.9
	<u>100.0%</u>

White:	
Tin Oxide	0.7%

Green:	
Mason Stain 6201	0.9%

Iron Blue:	
Mason Stain 6391	1.6%

Yields a smooth transparent glaze that is great over carved or incised decoration on porcelain.

From Tom & Elaine Coleman,
Ceramics Monthly, January 2003

HIGH-FIRE

HIGH-FIRE



Iron Red Glaze

(Cone 10)

Bone Ash	2.91 %
Pearl Ash (Potassium Carbonate)	10.68
Whiting	25.24
Custer Feldspar	6.80
Grolleg Kaolin	35.92
Silica	<u>18.45</u>
	100.00 %
Add: Red Iron Oxide (Spanish)	9.71 %



HIGH-FIRE

HIGH-FIRE



Oribe Glaze

(Cone 10, reduction)

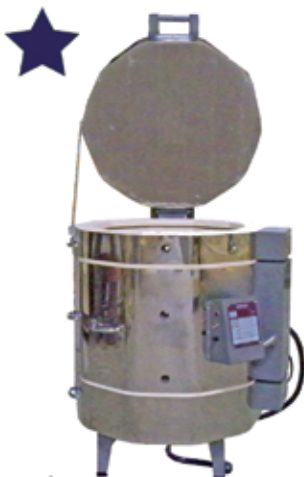
Bone Ash	1.1 %
Talc	7.8
Whiting	22.4
Custer Potash Feldspar	30.9
EPK Kaolin	12.5
Silica	<u>25.3</u>
	100.0 %
Add: Copper Carbonate	5.5 %
Bentonite	1.0 %

Yields bright translucent green in soda

Our Catalog is Now Online at BennettPottery.com

BENNETT POTTERY

WE WELCOME SCHOOL PURCHASE ORDERS



 OLYMPIC KILNS

2327HE

ELECTRONIC CONTROL
240 VOLTS/1 PHASE
23 3/8" WIDE x 27" DEEP
CONE 10 - 3" BRICK

\$1545

WITH LID LIFTER



* NORTH STAR *
24" SLAB ROLLER
PACKAGE

CALL FOR SUPER PRICE

* SUPER PRICES *

KILNS

L & L, PARAGON,
SKUTT, OLYMPIC, EXCEL

POTTERS WHEELS

BRENT, PACIFICA, SHIMPO

GLAZES & UNDERGLAZES

AMACO, LAGUNA

KEMPER TOOLS

AND MUCH MORE.....



brent
40th
anniversary

10 YEAR WARRANTY

BRENT CLASSIC POTTERS WHEELS

MODEL B \$880
MODEL C \$945
MODEL CXC \$1015



 SKUTT

KM 1027
AUTOMATIC KILN
240 VOLTS/1 PHASE

\$1669

PRICES SUBJECT
TO CHANGE

CALL FOR FREE CATALOG



* NORTH STAR *
STAINLESS STEEL
EXTRUDER PACKAGE
CALL FOR SUPER PRICE

BENNETT POTTERY SUPPLY
431 ENTERPRISE STREET
OCOEE, FL 34761

MASTERCARD OR VISA ACCEPTED

(800) 432-0074

FAX: (407) 877-3559